

# 15

## Electric Control System 电器控制系统



### Brief Introduction 总体介绍

The control system is consisted of industrial PC, electric batching scale, operation console and high voltage cabinet. The characteristics are software and hard ware integration, good anti-interference ability, steady and reliable working and high batching precision. The system adopts menu selection, which ensures the simple and convenient operation. The system can also monitor and manage the material feeding, batching and mixing process during the production course and it is the optimal choice to improve the batching precision, improve the production management, ensure the equipment safety and increase the economic benefit.

电器控制系统由计算机系统、电子配料秤、控制柜、强电柜组成。软硬件一体化，自动化程度高，抗干扰性能强，工作稳定可靠，配料精度高。系统采用菜单选择的工作方式，操作简单方便。控制系统对生产过程中的进料、配料、混合等设备进行监控和生产管理，是提高配料精度，改善生产管理水平的理想选择。

### Main Features 性能特点

#### Software characteristics:

The control program is developed according to the requirements of concrete performance, and adhered to practical situation of production process, with all kinds of functions.

1. Batching process and parameter are displayed on the same interface, and can be modified online.
2. Freely setup the amounts of storage prescription. You can choose several prescriptions at the same time, and shift them freely and modify the date online.
3. Adopt the technology of double speed feeding and automatic fall compensation so as to ensure weighing precision of each batch.
4. The parameter such as rate of water content, interval between door opening and closing, can be modified online.
5. The system can inspect main parameters intelligently, so it will prevent some mistakes caused by mistake input.
6. There is double-computer and double-control mode, so you can choose any control.
7. The system has perfect functions of data finding and printing.

全面考虑混凝土的工艺要求，非常贴合生产现场的各种实际情况，功能一应俱全：

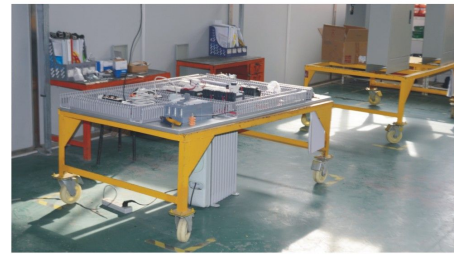
1. 配料过程以及参数同一画面显示，在线修改。
2. 配方存储量任意设置，可选择多个配方，任意切换，配方值在线修改。
3. 采用双速喂料、落差自动补偿，保证每盘计量精度。
4. 含水率、开关门时间等参数可以在线修改。
5. 系统对主要参数具有智能检测功能，防止由于输入错误引起的误动作。
6. 本系统按照双机双控设计，可以根据需要选择控制方式。
7. 数据查询、报表打印功能齐全。

#### Hardware characteristics:

1. The electric parts we choose are famous international brand Schneider or Siemens, with high quality and reliable performance.
2. The industry control computer and A / D card are famous brand, and have good performance with environment, which can ensure safety in production.
3. The imported sensor and meter have a reliable performance on inputting and dealing with data. Meanwhile, it is easy to operate them and safe to use.
4. The console is designed elaborately which suits body structure, so you would feel comfortable and happy during work.
5. Excellent protection makes maintenance and debugging and safe operation.

#### 硬件特点:

1. 主要电气件采用世界著名品牌（施耐德/西门子）：质量优胜，性能可靠。
2. 采用著名品牌工业控制机、输入输出卡，适应环境能力强，是安全生产的保障。
3. 进口传感器、仪表，数据传输、处理性能稳定可靠，操作省心，用起来放心。
4. 精心设计的操作台，贴合人体构造特点，工作起来贴心、贴心。
5. 各种保护一应俱全，维护简便、调试直观、操作安全。



EP-MACHINE

[EPMACHINE.com](http://EPMACHINE.com)